

ISOTOP® PRESSURE-TENSION ELEMENTS

DATASHEET



Quickly find the right Isotop® machine bearing for your application with the EquipCalc selection program from Getzner.



Register online now
apps.getzner.com

PRODUCT BENEFITS

- Effective vibration damping and isolation of vibrations
- High degree of stability
- Versatile application options

All information and data are based on our current knowledge. It can be used in calculations and for reference purposes, but is subject to product-specific and application-specific manufacturing tolerances and does not represent warranted properties. Material properties and their tolerances vary depending on the type of application and load and are available from Getzner on request. Subject to change without notice.

For further general information, see VDI Directive 2062 and glossary.
Further characteristic values available on request.

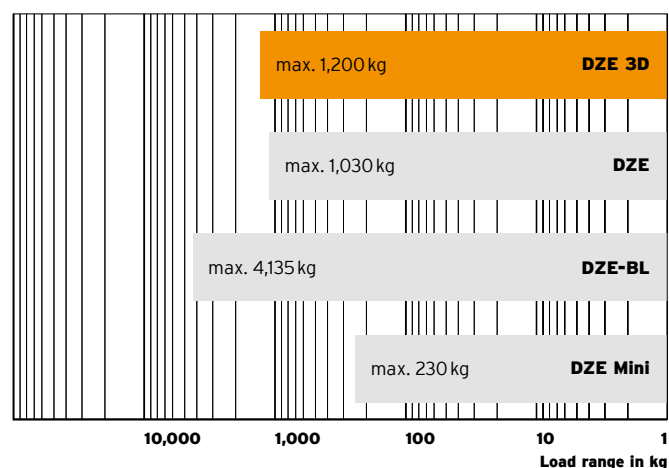
getzner

ISOTOP® DZE 3D



Isotop® type overview

Static application range



Description

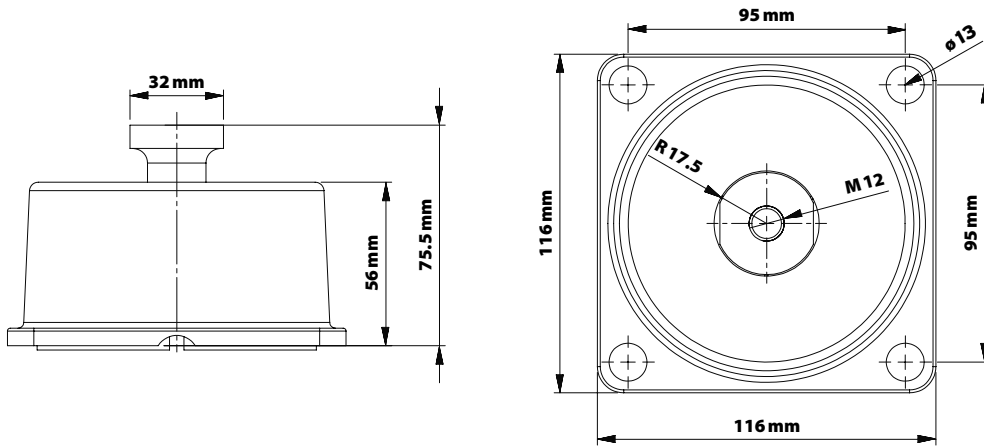
Category	Pressure-tension element
Material	Die-cast stainless steel: housing 1.4308, inner part 1.4301 19 mm Sylodamp® 30 mm Sylodyn® isolating layer
Dimensions	78×160×160 mm

Product characteristics

Natural frequency from	11.3 Hz
Load range	0-1,200 kg / 11,772 N
Dyn. horizontal stiffness	0.88-3.96 kN/mm
Overall height, unloaded	78 mm
Connection thread	M12 internal thread
Coating	n.a.
Permissible temperature range	-30 °C to +70 °C
Suitable accessories	-



[getzner.com/
pressure-tension-elements](https://www.getzner.com/pressure-tension-elements)

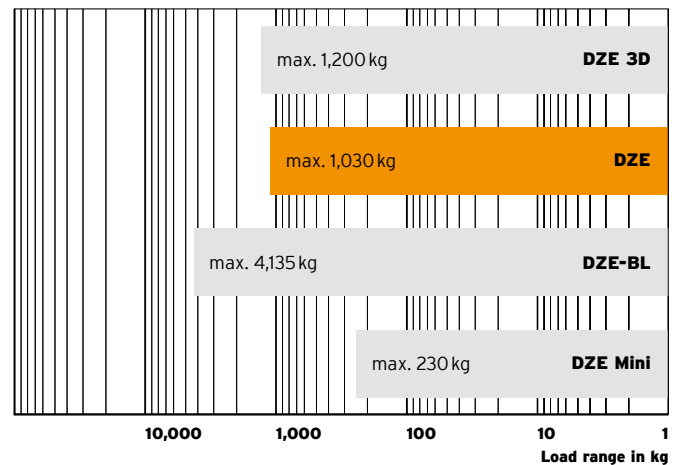
Isotop® DZE 3D
(unloaded)

ISOTOP® DZE-1



Isotop® type overview

Static application range



Description

Category	Pressure-tension element
Material	Die-cast stainless steel: housing 1.4308, inner part 1.4301 25 mm SyloDYN® 12.5 mm SyloDAMP®
Dimensions	65 × 100 × 100 mm

Product characteristics

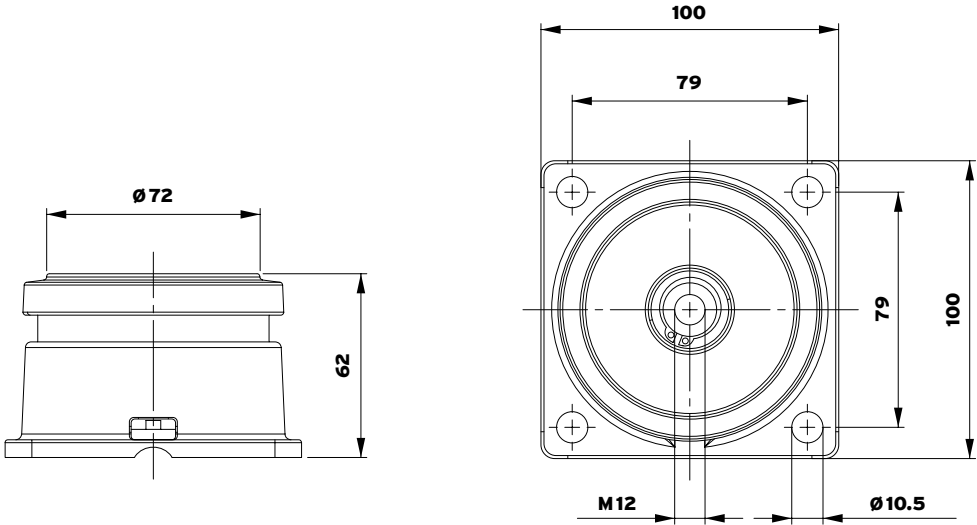
Natural frequency from	9.5 Hz
Load range	0-1,030 kg / 10,104 N
Overall height, unloaded	65 mm
Connection thread	M12 internal thread
Coating	n.a.
Permissible temperature range	-30 °C to +70 °C
Suitable accessories	-



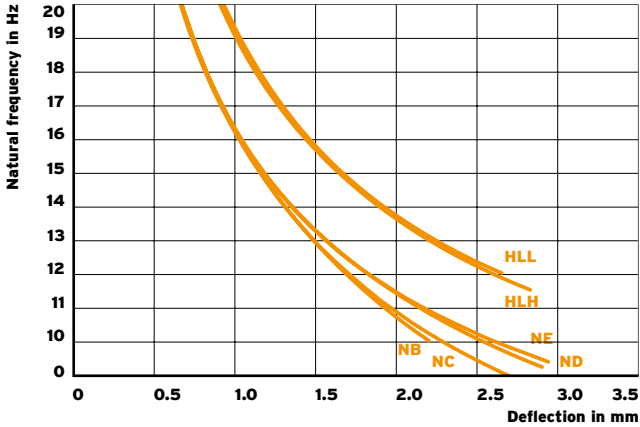
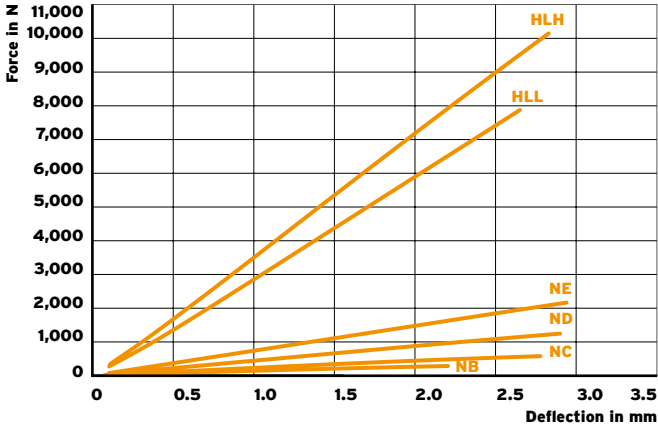
[getzner.com/
pressure-tension-elements](https://www.getzner.com/pressure-tension-elements)

by getzner
isotop®

Isotop® DZE-1
(unloaded)



Isotop® DZE-1

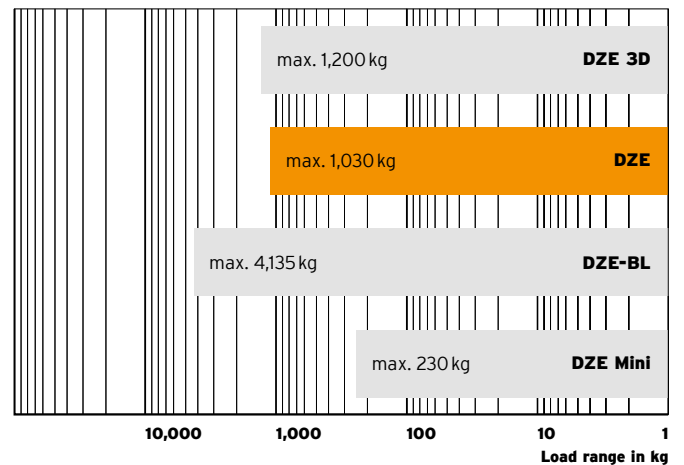


ISOTOP® DZE-2



Isotop® type overview

Static application range



Description

Category	Pressure-tension element
Material	Die-cast stainless steel: housing 1.4308, inner part 1.4301 50 mm Sylodyn® 12.5 mm Sylodamp®
Dimensions	87 × 100 × 100 mm

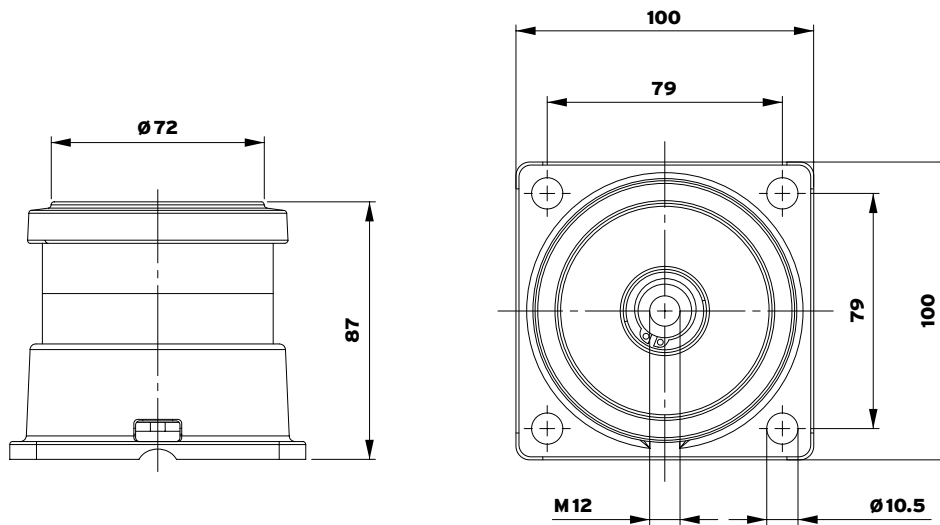
Product characteristics

Natural frequency from	7 Hz
Load range	0-820 kg / 8,044 N
Overall height, unloaded	87 mm
Connection thread	M12 internal thread
Coating	n.a.
Permissible temperature range	-30 °C to +70 °C
Suitable accessories	-

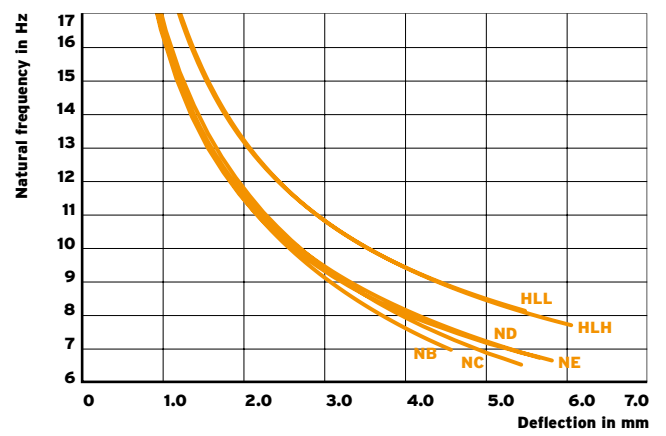
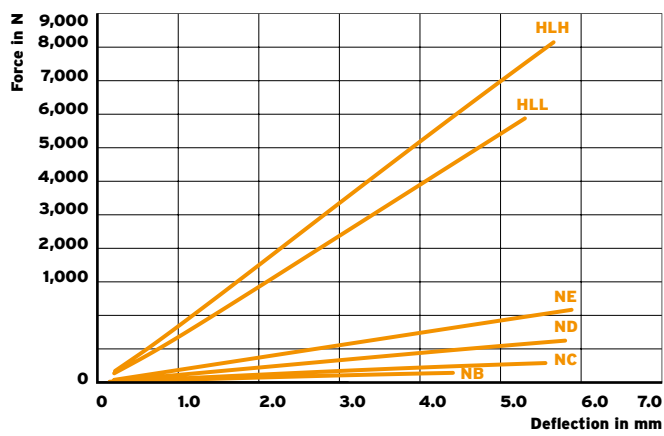


[getzner.com/
pressure-tension-elements](https://www.getzner.com/pressure-tension-elements)

Isotop® DZE-2
(unloaded)



Isotop® DZE-2

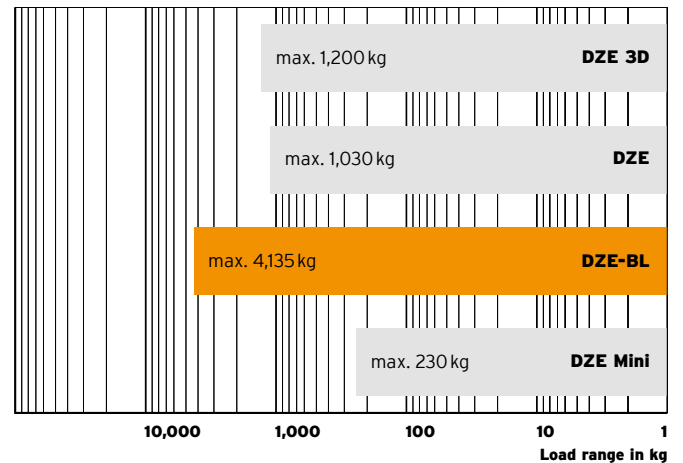


ISOTOP® DZE-1-BL



Isotop® type overview

Static application range



Description

Category	Pressure-tension element Custom version available
Material	Die-cast stainless steel: housing 1.4308, inner part 1.4301 25 mm Sylodyn® 12.5 mm Sylodamp® Pressure plates (steel)
Dimensions	As per drawing

Product characteristics

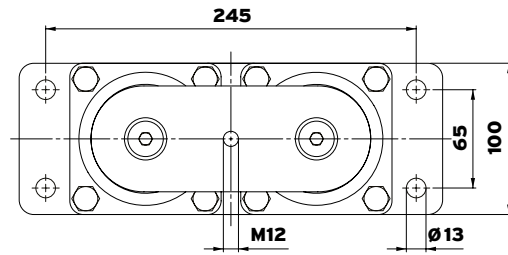
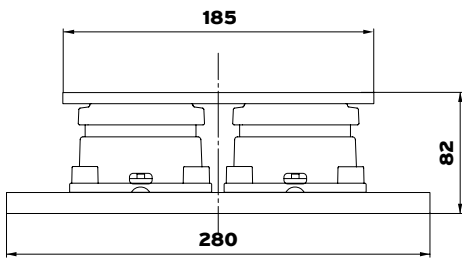
Natural frequency from	11.5 Hz
Load range	0-4,135 kg / 40,564 N
Overall height, unloaded	As per drawing
Connection thread	As per drawing
Coating	–
Permissible temperature range	-30 °C to +70 °C
Suitable accessories	–



[getzner.com/
pressure-tension-elements](https://www.getzner.com/pressure-tension-elements)

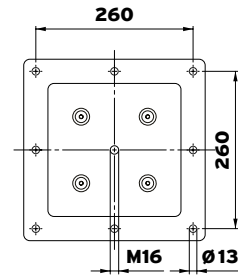
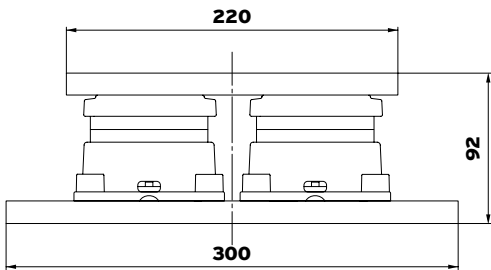
Isotop® DZE-1-BL 2

(unloaded)

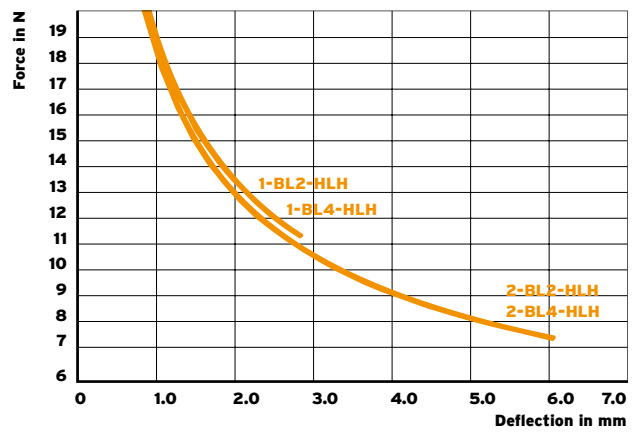
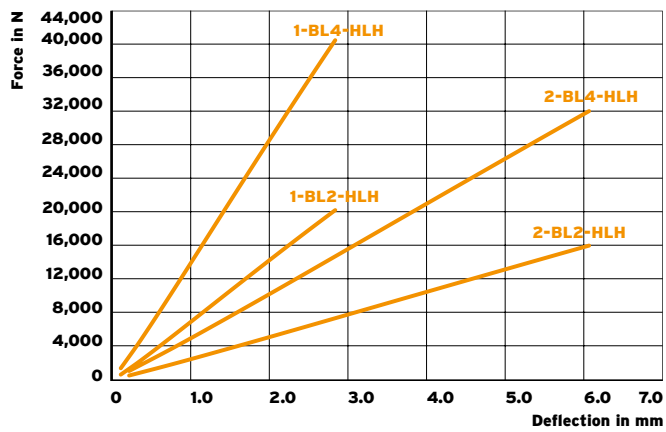


Isotop® DZE-1-BL 4

(unloaded)



Isotop® DZE-1-BL

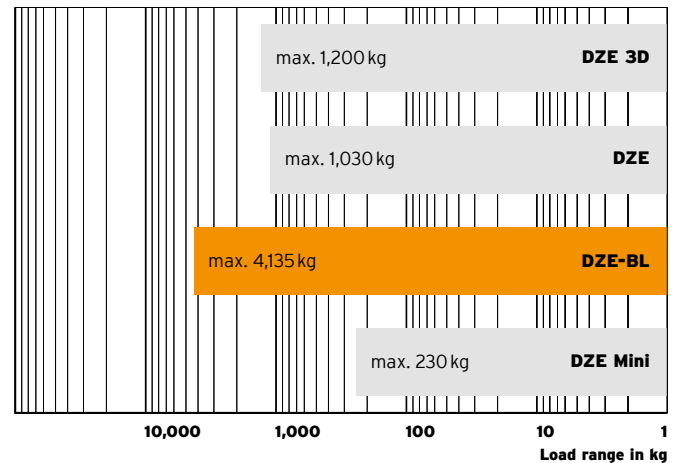


ISOTOP® DZE-2-BL



Isotop® type overview

Static application range



Description

Category	Pressure-tension element Custom version available
Material	Die-cast stainless steel: housing 1.4308, inner part 1.4301 50 mm Sylodyn® 12.5 mm Sylodamp® Pressure plates (steel)
Dimensions	As per drawing

Product characteristics

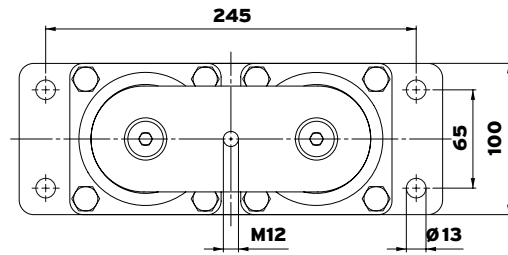
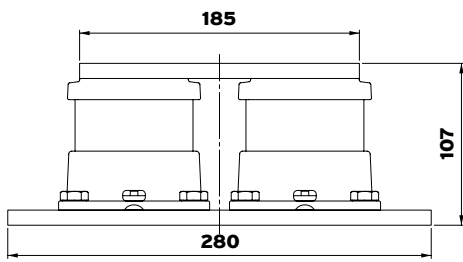
Natural frequency from	7.7 Hz
Load range	0-3,270 kg / 32,079 N
Overall height, unloaded	As per drawing
Connection thread	As per drawing
Coating	–
Permissible temperature range	-30 °C to +70 °C
Suitable accessories	–



[getzner.com/
pressure-tension-elements](https://www.getzner.com/pressure-tension-elements)

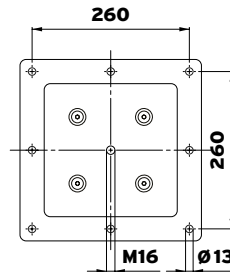
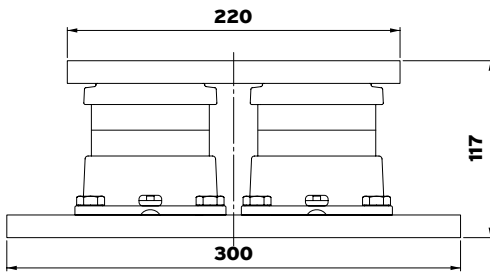
Isotop® DZE-2-BL 2

(unloaded)

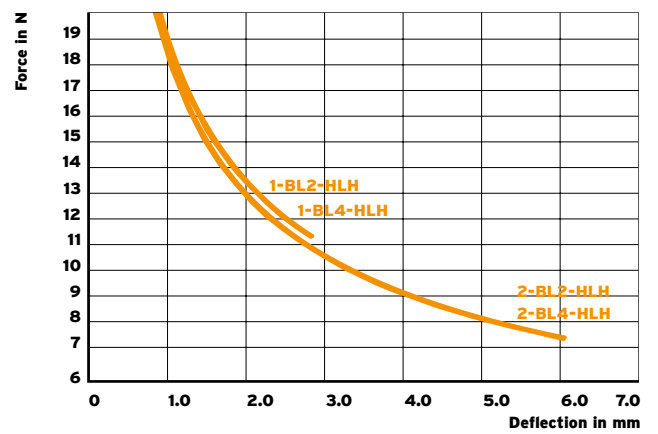
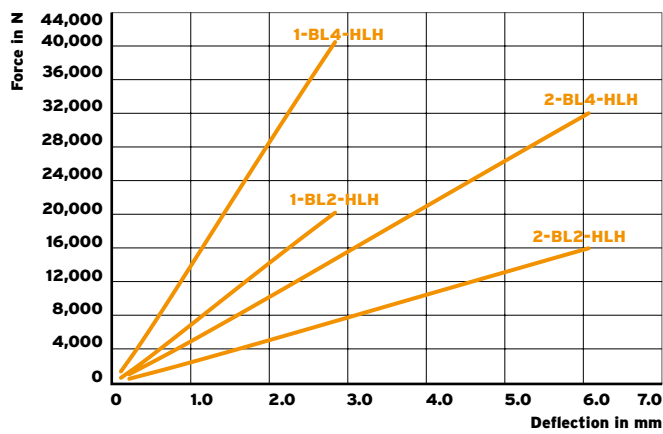


Isotop® DZE-2-BL 4

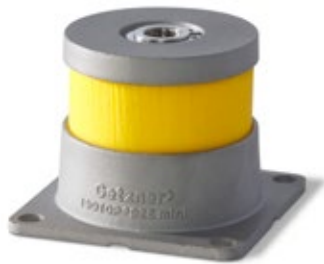
(unloaded)



Isotop® DZE-2-BL

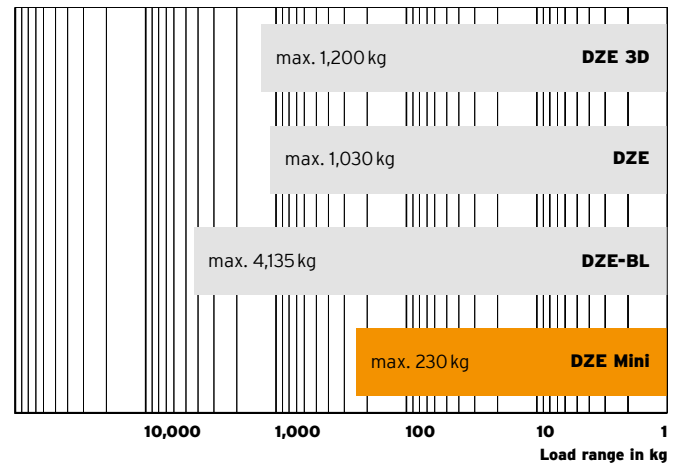


ISOTOP® DZE MINI



Isotop® type overview

Static application range



Description

Category	Pressure-tension element
Material	Die-cast stainless steel: housing 1.4308, inner part 1.4301 25 mm Sylodyn® 6 mm Sylodamp®
Dimensions	49×65×65 mm

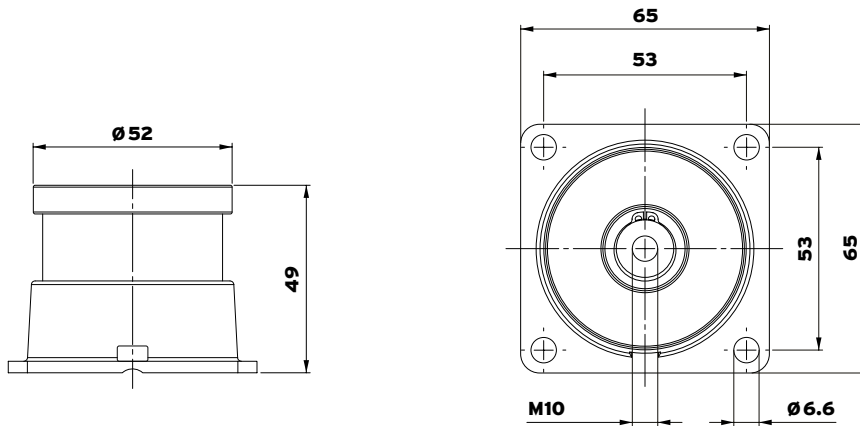
Product characteristics

Natural frequency from	9.6 Hz
Load range	0-230 kg / 2,256 N
Overall height, unloaded	49 mm
Connection thread	M10 internal thread
Coating	–
Permissible temperature range	-30 °C to +70 °C
Suitable accessories	–



[getzner.com/
pressure-tension-elements](https://www.getzner.com/pressure-tension-elements)

Isotop® DZE Mini
(unloaded)



Isotop® DZE Mini

