

# ISOTOP® STEEL SPRINGS

## DATASHEET



Quickly find the right Isotop® machine bearing for your application with the EquipCalc selection program from Getzner.



Register online now  
[apps.getzner.com](https://apps.getzner.com)

## PRODUCT BENEFITS

- Excellent isolation properties due to low natural frequency
- Ideal for applications with low excitation frequencies in industrial environments
- Standard overall heights across the product family offer advantages during installation and reduce the workload when reconfiguring systems

All information and data are based on our current knowledge. It can be used in calculations and for reference purposes, but is subject to product-specific and application-specific manufacturing tolerances and does not represent warranted properties. Material properties and their tolerances vary depending on the type of application and load and are available from Getzner on request. Subject to change without notice.

For further general information, see VDI Directive 2062 and glossary.  
Further characteristic values available on request.

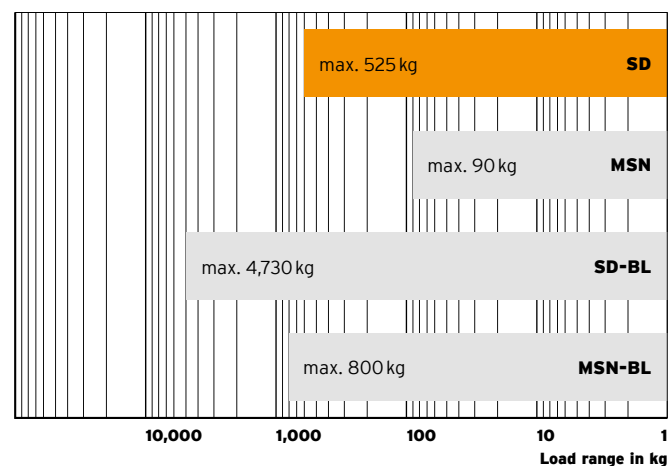
**getzner**

# ISOTOP® SD



## Isotop® type overview

Static application range



## Description

<b>Category</b>	Steel spring Design conforms to DIN EN 13906-1
<b>Material</b>	Metal caps made of steel, spring steel
<b>Dimensions</b>	H 94 mm / D 70 mm

## Product characteristics

<b>Natural frequency from</b>	3.2 Hz
<b>Load range</b>	0–525 kg / 5,150 N
<b>Overall height, unloaded</b>	94 mm
<b>Connection thread</b>	M10 internal thread
<b>Coating</b>	Electro-galvanised Alternatively, cathodic dip-painted
<b>Permissible temperature range</b>	-30 °C to +70 °C
<b>Suitable accessories</b>	Isotop FP/K 1-9 <sup>1</sup> Isotop FP/K 1-9 KTL <sup>1</sup> Isotop FP 1-9 <sup>2</sup> Isotop FP 1-9 KTL <sup>2</sup> Isotop NV 1-9

<sup>1</sup> incl. M10 connecting screws between base plate and spring

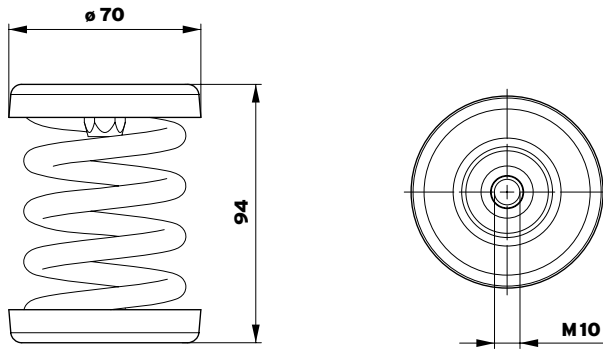
<sup>2</sup> without M10 connecting screws between base plate and spring



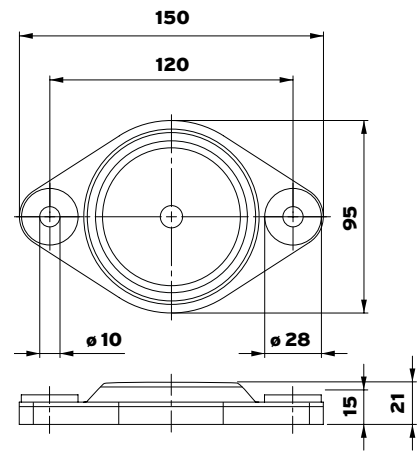
[getzner.com/  
spring-mounts](https://www.getzner.com/spring-mounts)

by getzner  
**isotop**®

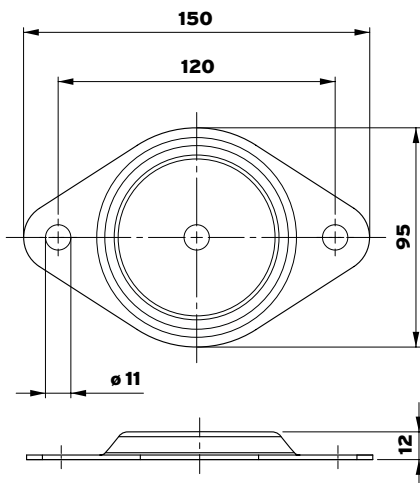
**Isotop® SD**  
(unloaded)



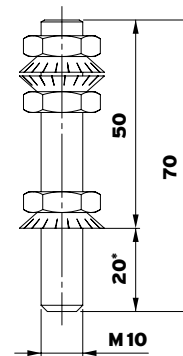
**Isotop® FP/K**



**Isotop® FP**

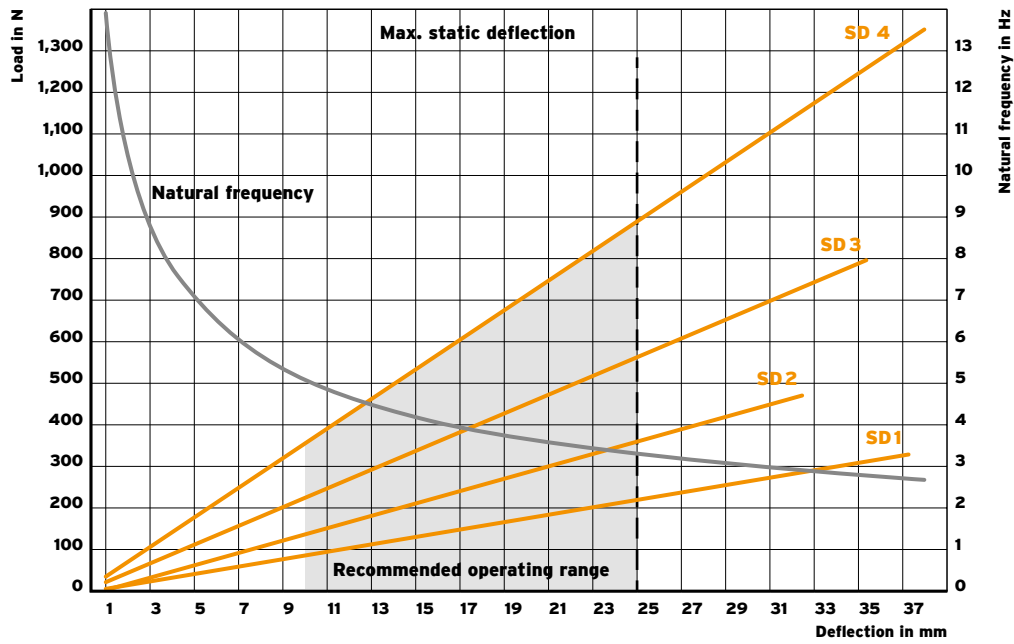


**Isotop® NV1-9**

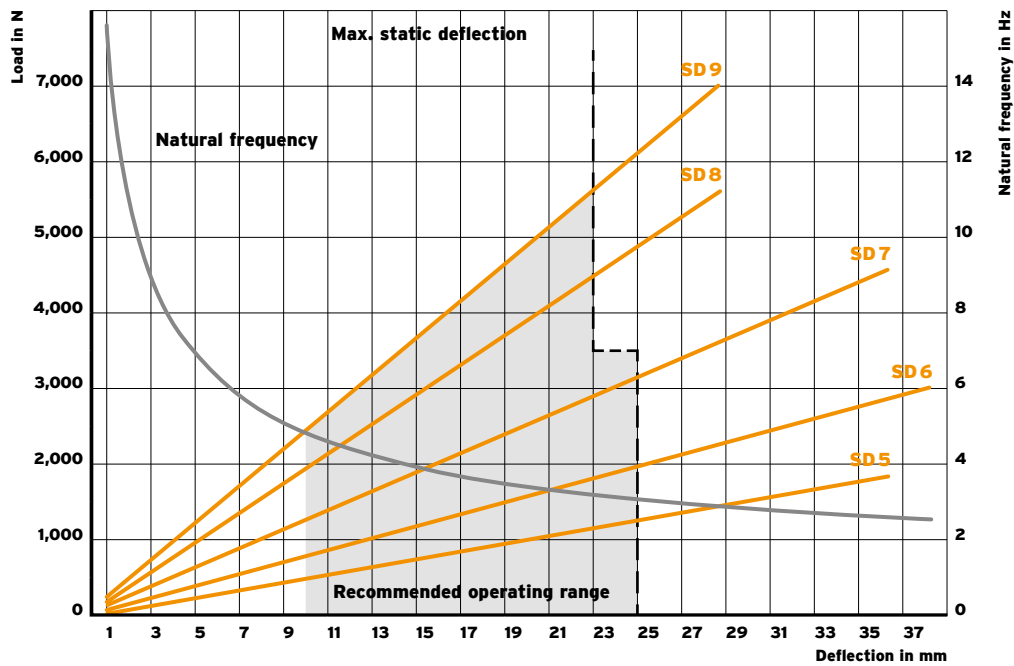


\*Thread reach SD/DSD

**Isotop® SD 1-4**



**Isotop® SD 5-9**

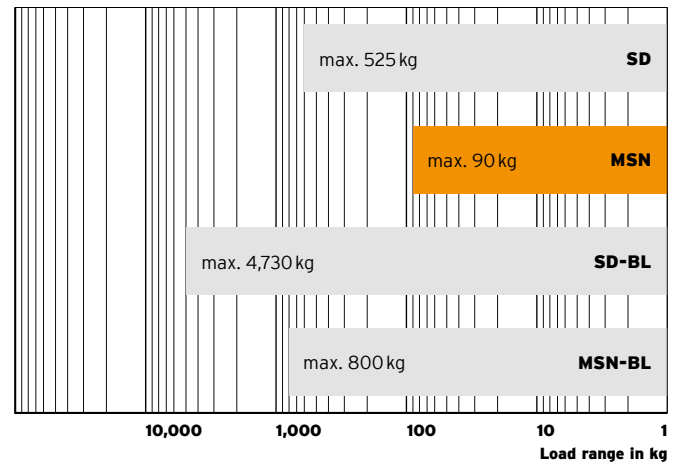


# ISOTOP® MSN



## Isotop® type overview

Static application range



## Description

<b>Category</b>	Steel spring Design conforms to DIN EN 13906-1
<b>Material</b>	Metal caps made of steel, spring steel
<b>Dimensions</b>	H 57 mm / D 52 mm

## Product characteristics

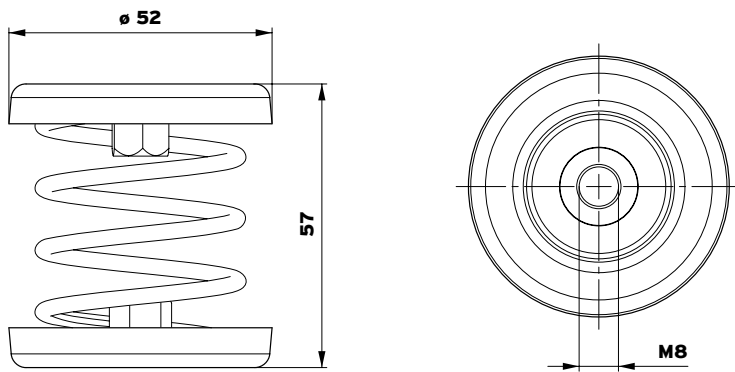
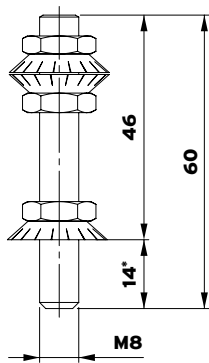
<b>Natural frequency from</b>	3.5 Hz
<b>Load range</b>	0–90 kg / 883 N
<b>Overall height, unloaded</b>	57 mm
<b>Connection thread</b>	M8 internal thread
<b>Coating</b>	Electro-galvanised, alternatively, cathodic dip-painted
<b>Permissible temperature range</b>	-30 °C to +70 °C
<b>Suitable accessories</b>	Isotop NV 1-8 MSN



[getzner.com/  
spring-mounts](https://www.getzner.com/spring-mounts)

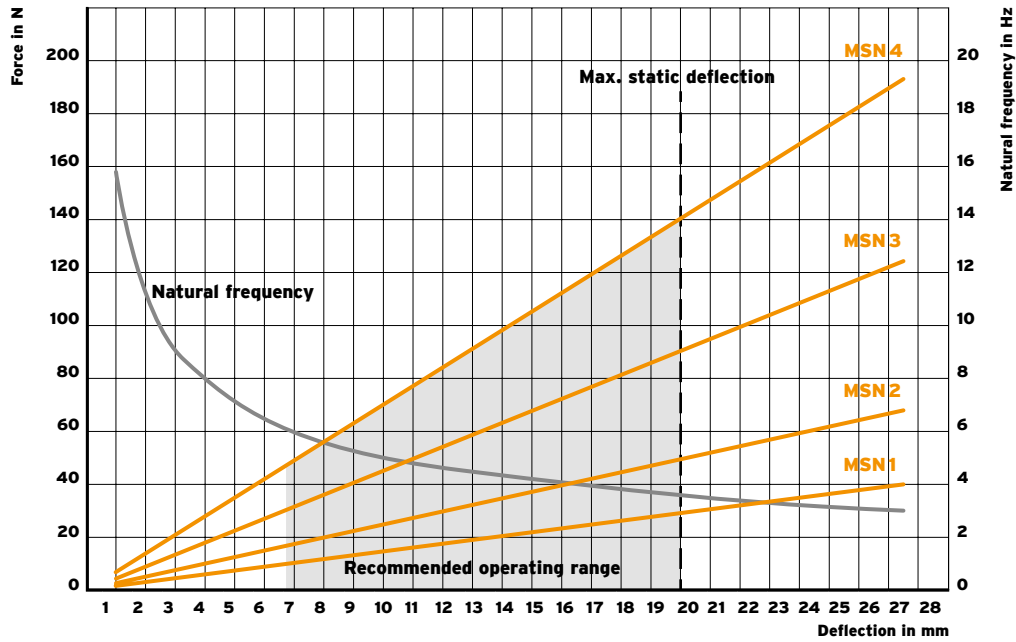
**Isotop® MSN**

(unloaded)

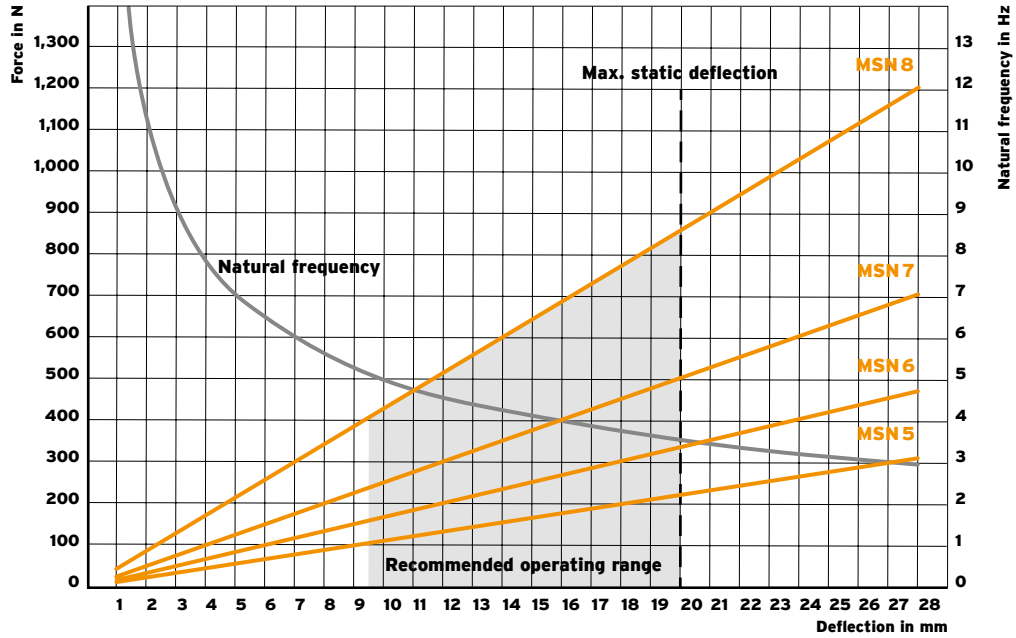
**Isotop® NV 1-8 MSN**

\* Thread reach MSN/DMSN

**Isotop® MSN 1-4**



**Isotop® MSN 5-8**

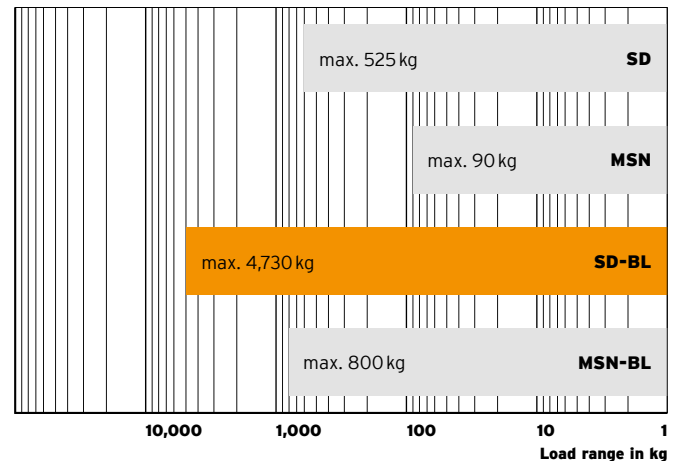


# ISOTOP® SD-BL



## Isotop® type overview

Static application range



## Description

<b>Category</b>	Steel spring Custom version available
<b>Material</b>	4 mm Sylomer® anti-slip plates Metal caps made of steel Spring steel 6 mm steel pressure plates
<b>Dimensions</b>	As per drawing

## Product characteristics

<b>Natural frequency from</b>	3.2 Hz
<b>Load range</b>	0–4,730 kg / 46,401 N
<b>Overall height, unloaded</b>	114 mm
<b>Connection thread</b>	M12 internal thread
<b>Coating</b>	Cathodic dip-painted springs Powder-coated pressure plates
<b>Permissible temperature range</b>	-30 °C to +70 °C
<b>Suitable accessories</b>	Isotop® DT (SD-BL 2 and SD-BL 4)

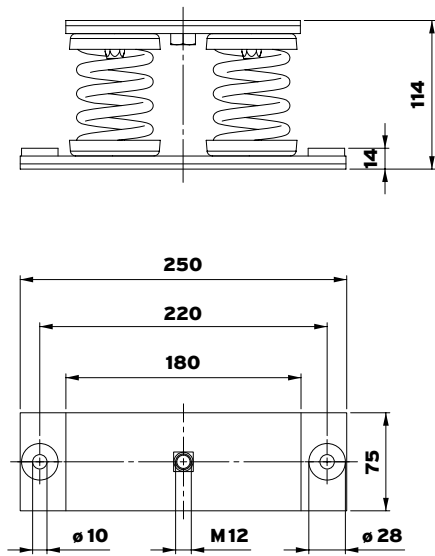


[getzner.com/  
spring-mounts](https://www.getzner.com/spring-mounts)



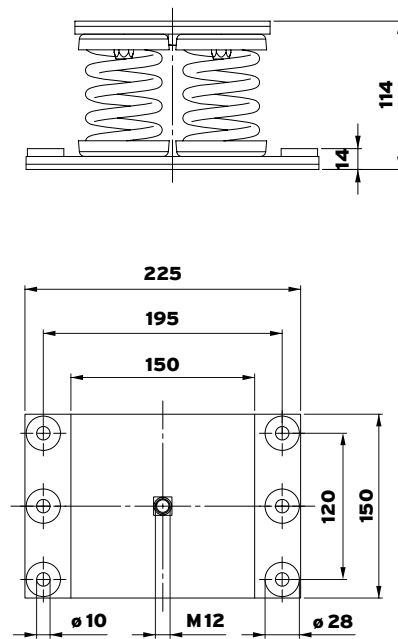
**Isotop® SD-BL 2**

(unloaded)



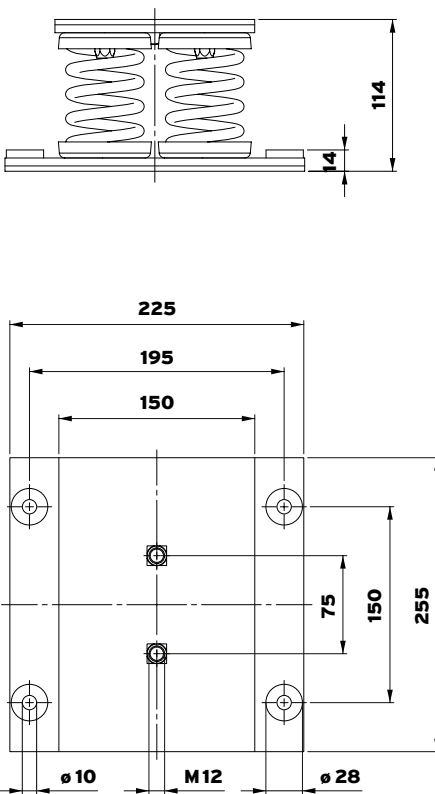
**Isotop® SD-BL 4**

(unloaded)



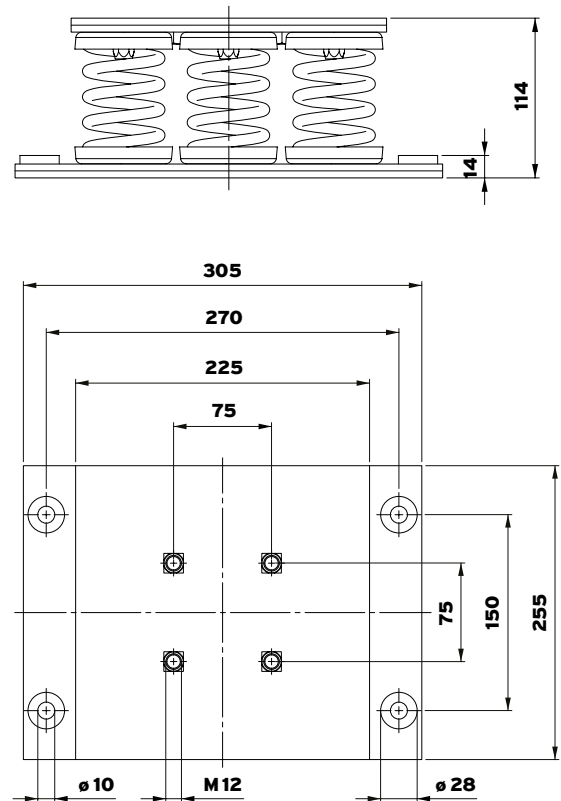
**Isotop® SD-BL 6**

(unloaded)

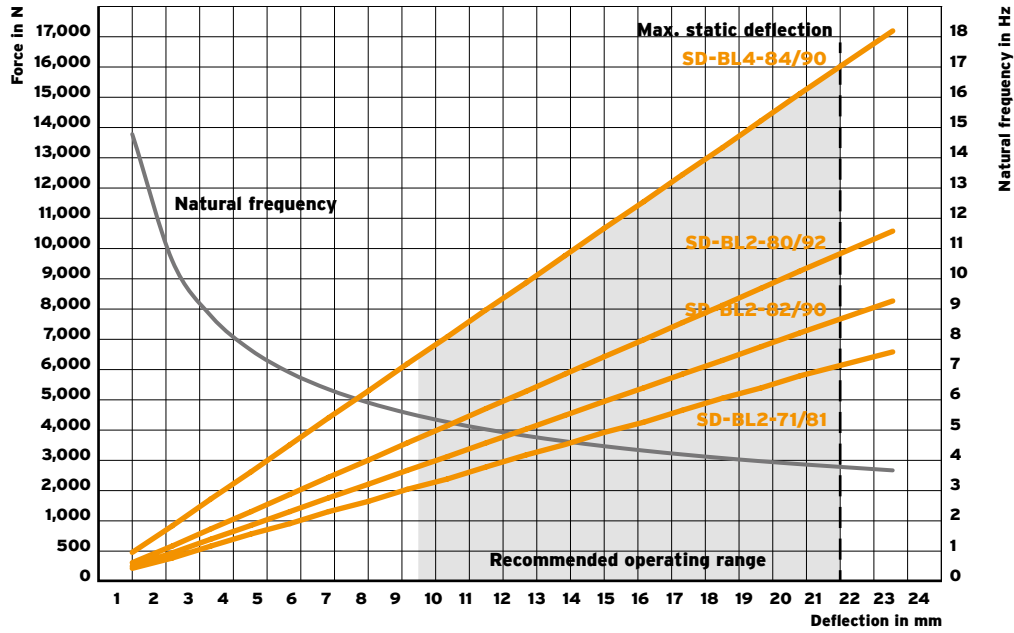


**Isotop® SD-BL 9**

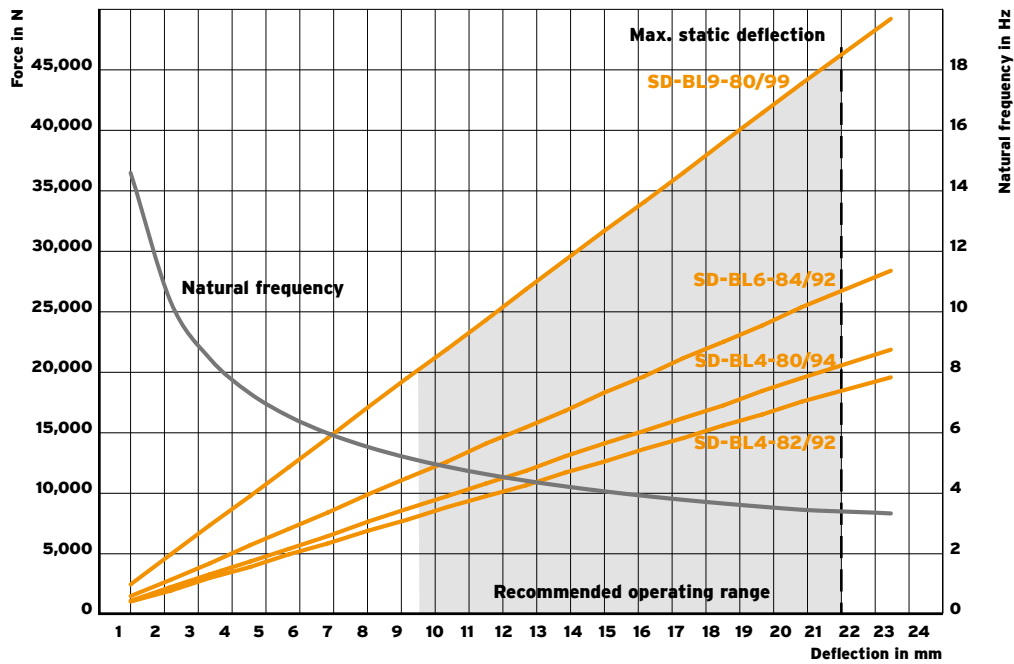
(unloaded)



**Isotop® SD-BL 2 + SD-BL 4**



**Isotop® SD-BL 4 + SD-BL 6 + SD-BL 9**

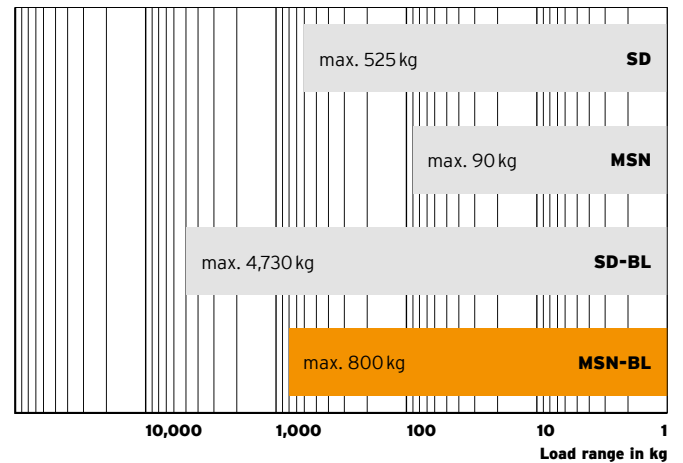


# ISOTOP® MSN-BL



## Isotop® type overview

Static application range



## Description

<b>Category</b>	Steel spring Design conforms to DIN EN 13906-1
<b>Material</b>	4 mm Sylomer® anti-slip plates Metal caps made of steel Spring steel 5 mm steel pressure plates
<b>Dimensions</b>	As per drawing

## Product characteristics

<b>Natural frequency from</b>	3.5 Hz
<b>Load range</b>	0–800 kg / 7,848 N
<b>Overall height, unloaded</b>	75 mm
<b>Connection thread</b>	M10 internal thread
<b>Coating</b>	Cathodic dip-painted springs and metal caps Powder-coated pressure plates
<b>Permissible temperature range</b>	-30°C to +70°C
<b>Suitable accessories</b>	–

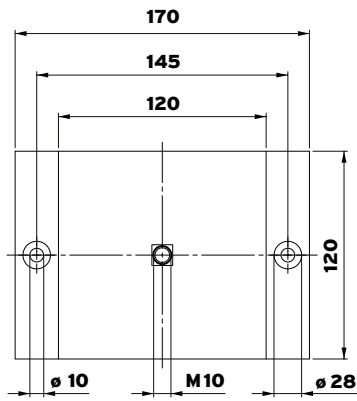
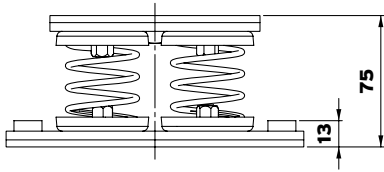


[getzner.com/  
spring-mounts](https://www.getzner.com/spring-mounts)

by getzner  
**isotop**®

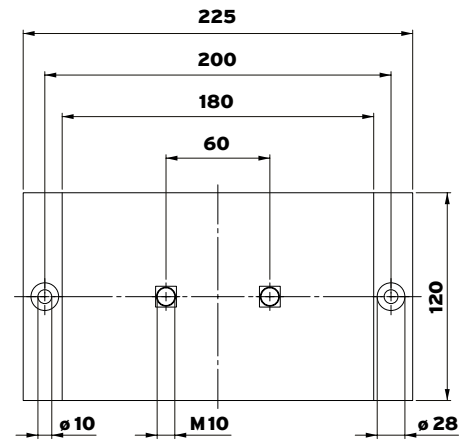
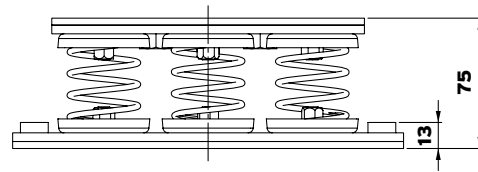
**Isotop® MSN-BL 4**

(unloaded)



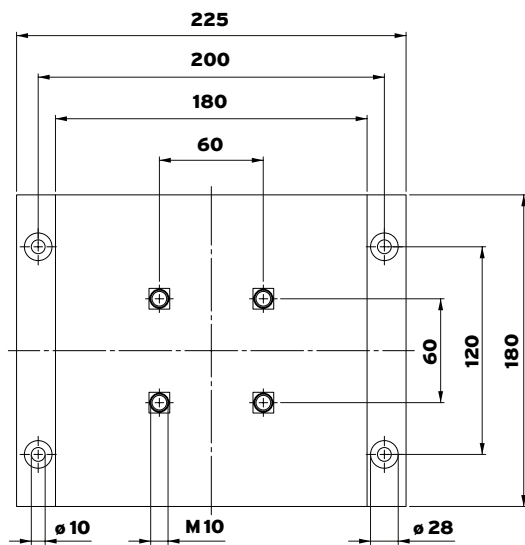
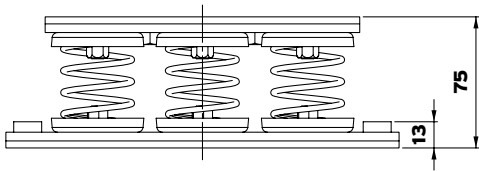
**Isotop® MSN-BL 6**

(unloaded)

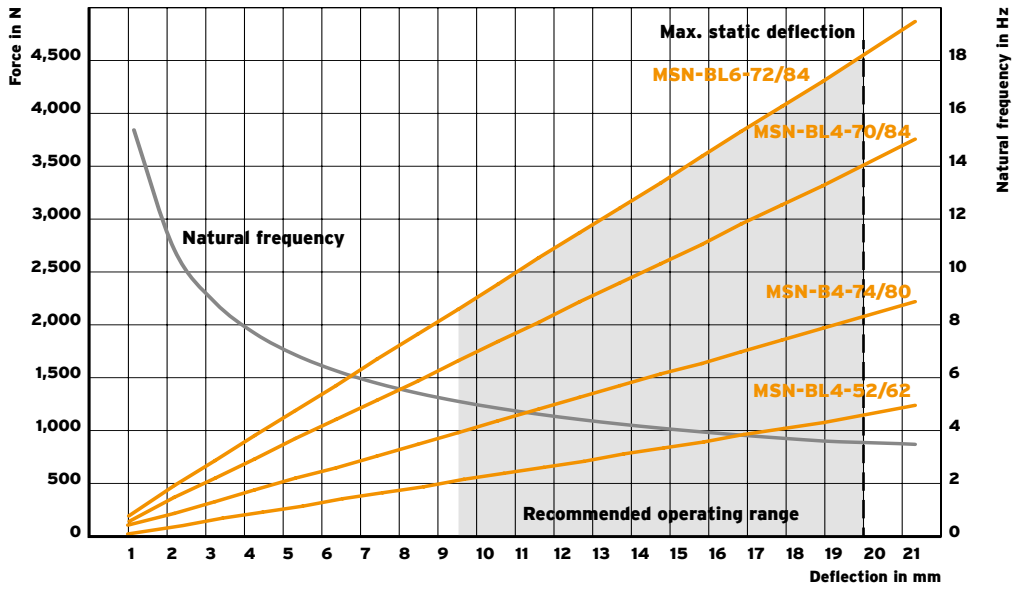


**Isotop® MSN-BL 9**

(unloaded)



### Isotop® MSN-BL 4 + MSN-BL 6



### Isotop® MSN-BL 6 + MSN-BL 9

